

# **Stellar Explorer v1.0 Index**

(c) 1992 by Technological Computer Innovations

*This program is ShareWare.*

## **Introduction**

[About Stellar Explorer](#)

[About Technological Computer Innovations](#)

[System Requirements](#)

[Sound Support](#)

[Definitions](#)

## **How to Play**

[Game Play](#)

[Control Panel](#)

[Function Keys](#)

[Suggestions](#)

## **Commands**

[Mission Menu](#)

[Control Menu](#)

[Help Menu](#)

## **Enhancements**

[Future Releases](#)

## **Registration**

[How to Register](#)

The Index contains a list of all Help topics available for Stellar Explorer. You can obtain detailed information about each topic by clicking the underlined items (also shown in highlighted text).

## About Stellar Explorer

This game is a representation of the original Star Trek(TM) game written for the PDP-11 at Dartmouth in the early 70's. Though many effects have been enhanced, the playability of the game remains similar to the original.

The galaxy consists of a 10x10 matrix, each cell representing a quadrant in the galaxy. Each quadrant is then broken down into a 10x10 grid of sectors.

The object of the game is to destroy all the aliens before either they destroy you or you run out of energy. You have control of a warp engines, shields, phasers and photons, and a computer if necessary. Docking at a starbase gives you complete replenishment of fuel, photons and full repairs of all systems. You can have a maximum of 7 photons at your disposal and are replenished with that amount when at a starbase. Sitting at a starbase while firing on aliens within a sector will not allow you to be invincible. In order to re-dock at a starbase, you must leave and re-enter the grid area where the starbase is located. If all your starbases are destroyed, either by enemy fire or by your own doing, the game will also conclude.

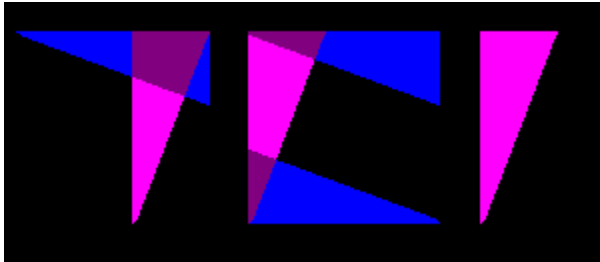
-- Good Luck!

Stellar Explorer is [ShareWare](#). Please feel free to distribute this product freely, but keep the original files together.

## **About Technological Computer Innovations (TCI)**

TCI specializes in multimedia software development in the MS-DOS and MS-Windows (tm) environments.

Please feel free to contact us with suggestions for enhancements to Stellar Explorer or other programs you would like to see.



*Technological Computer Innovations*

**255 N. Cherrywood Drive  
Lafayette, CO 80026-2726**



**(303) 673-9046**

**FAX: (303) 673-9085**

Look for other MS-Windows software titles coming soon:

WFL - Windows Football League  
MorseCode - A Morse Code Trainer for Windows  
WLB - Windows League Baseball  
DevLibs - Windows Development Libraries

## **System Requirements**

A 286-based DOS-compatible computer

1 MB of RAM

1 MB of available hard disk space

Microsoft Windows 3.0 or higher and Windows 3.0-compatible hardware

Mouse or other pointing input device

VGA display resolution or higher (uses 16 colors)

MPC sound card (optional)

Recommended:

A 386-based 25-MHz (or higher) DOS-compatible computer, 2 MB of RAM, a 40 MB hard disk, a VGA display, a mouse or other pointer and MPC sound board with either Windows 3.1 or Windows 3.0 with multimedia extensions.

Stellar Explorer was developed on a 386-25 MHz system and tested on a 486-33 MHz system.

## Sound Support

There are sound effects that are routed to your system's MPC sound board (if supported and installed).

MIDI sound output is used for playing various sounds while the photon is in motion. By default, this MIDI output is directed to the MIDI mapper. Be sure that your MIDI mapper is set to channel MIDI sound to the FM sound board in your system or that MIDI devices are connected and properly set.

To turn sound on or off, bring up the Options dialog box and check the sound checkbox. Also, **F5** will toggle the sound on and off, but this method will not save to the STELLAR.INI file.

## **Game Play**

### **Basics**

The object of Stellar Explorer is to eliminate all of the aliens before you are destroyed. You can determine how many aliens you have to destroy by looking at the **Aliens:** field in the control dialog. You will have to destroy all of the aliens in order to win. If your energy level reaches zero or you are destroyed by an alien attack, you have lost and the game ends. In this version, the aliens will not attack starbases, but you have the ability to destroy your own starbases. If this happens, you will also have lost the game.

You have warp engines which allow you to navigate around the galaxy and within quadrants. You also have two different types of weapons -- Phasers and Photons -- which allow you to shoot at and destroy the aliens. The aliens will also be firing at you throughout the game. The game was designed to allow "turns" to be taken. When entering a quadrant with aliens, they will fire upon you. When finished, it will be your turn to either fire back or run away. Thus, in this version, aliens will not fire continuously, but await your next move before returning more fire.

The galaxy is broken up into quadrants and the quadrants are broken up into sectors. A long range scan gives you an indication of what starbases and aliens are in the adjoining quadrants and a short range scan shows you all the sectors of a given quadrant.

You will need to pay special attention to your energy level and the condition of all of your onboard systems. The replenishment of your energy and all system repairs will be conducted upon docking with a starbase.

### **Galaxy Map**

The galaxy map shows you what areas of the galaxy that you've "uncovered" with the Long-Range scan. Viewing the galaxy map does not require any energy and does not constitute a turn.

### **Long-Range Scan**

The long-range scan is used to view what is in your quadrant (from a galaxy point of view) and adjoining quadrants. The long-range scan records this information to the galaxy map and requires 50 units of energy to do so. It is helpful to locate aliens and starbases in surrounding quadrants.

### **Short-Range Scan**

The short-range scan gives a detailed look at what is in your current quadrant. You must be viewing the short-range scan to fire upon aliens and dock with starbases. When viewing the short-range scan, warping is done within a quadrant.

### **Warp**

Using the warp drive consists of selecting a direction for warp (using the directional controls) and then selecting an amount of energy. (One unit of energy will take you one space away from your current location.) Warping while viewing the galaxy map or long-range scan will move your ship across sectors, while using the warp engines while in the short-range scan will allow you to warp within that sector. The warp engines are susceptible to damage from alien fire. If engines are damaged, they may fail when attempting to warp. If this is the

case, attempt to locate and dock with a starbase for repairs.

## **Computer**

The computer requires 100 units of energy to bring up. Available options are hyperspace (2500 units of energy), finding the nearest starbase (1000 units of energy) or finding the nearest alien (2000 units of energy). Using these functions should be for emergency situations as they require a lot of energy.

## **Shields**

Shields help prevent alien fire from damaging your ship. They also require more energy when they are up. As you cannot engage warp drive with the shields up, the shields are lowered automatically when the warp drive is engaged. Shields are raised automatically when entering a quadrant containing alien ships.

## **Weapons**

### **Phasers**

Phasers will disperse energy fired amongst the aliens in the current sector (i.e. phaser fire of 900 units with 3 aliens in the sector will yield 300 units of energy being directed at each alien). Though phasers do not ensure a kill, your ship does not have to be aligned with an alien to hit it. This weapon is effective when something is blocking the path of a possible photon or when there are multiple aliens within a sector.

### **Photons**

Although photons are more effective weapons (they ensure a kill if they hit an alien), they require your ship to be aligned with an alien on a direct course (at 45 or 90 degree angles). Photons also require 500 units of energy to fire and you have a limited arsenal of them (7 maximum). Docking with a starbase replenishes your supply of seven photon torpedoes.

## **Aborting**

Aborting the mission will show the entire galaxy map -- revealing the locations of all remaining aliens and starbases.

## **Damage**

As aliens fire upon your ship, certain controls and functions may become damaged. If this occurs, you will want to dock with one of your starbases to repair these damages. Damaged items will be indicated in the status area (lower part) of the control panel. When items become damaged, their reliability decreases proportionally to the damage they have received. If the engines are damaged and thus at 75% efficiency, there is a 3 in 4 chance they will work properly.

## **Extra**

Double-click on the **About Stellar Explorer...** dialog box.



## **Suggestions**

The best defense is always a good offense. You should hit the aliens as hard as possible, watching your status and energy readings. If you get too heavily damaged and your energy is running low, you must find and dock with a starbase to repair your ship and replenish your energy. When in doubt, the computer can be accessed to help you in hazardous situations.

## **Mission Menu**

### **New**

Start a new game.

### **Options**

Game options (controls sound on/off, 3-D Windows effects, and animation delay).

### **High Scores**

Shows the high score dialog box.

### **Exit**

Exit Stellar Explorer.

## **Control Menu**

### **Galaxy Map**

View the 10x10 matrix of the galaxy and where you've used the LRS.

### **Long Range Scan**

View the current and immediately surrounding sectors.

### **Short Range Scan**

View the 10x10 matrix of the current sector.

### **Computer**

Find the nearest starbase or alien or allow entering hyperspace.

### **Shields**

Toggle the shields ON/OFF.

### **Warp**

Engage the warp engine.

### **Fire Phaser**

Fire phasers at any enemies in the sector.

### **Fire Photon**

Fire a photon at any enemies in the sector.

### **Abort**

Abort the mission.

## **Help Menu**

### **Help**

Bring up this Stellar Explorer Help file.

### **Key Help**

Bring up a dialog box showing the various graphical items.

### About TCI...

About Technological Computer Innovations

### About Stellar Explorer

Information about the game

## **Planned Enhancements**

Future revisions and enhancements depend on user feedback and contributions. The more ideas and funding we receive, the more able we will be to implement new features. We welcome all comments and funding for the further development of Stellar Explorer. With the release of Windows 3.1 and the MS-C 7.0 compiler we are planning on updating Stellar Explorer to handle some of the new features of Windows 3.1. More functionality and better graphical and sound effects are planned to be added.

## **Suggestions**

Please send your suggestions for game improvements and enhancements to:

**Technological Computer Innovations**

255 N. Cherrywood Drive  
Lafayette, CO 80026-2726

or FAX them to (303) 673-9085

If your ideas are used, your name will be credited in the subsequent program release.

## How to Register

Please send \$20.00 in U.S. dollars and the following information:

Name: \_\_\_\_\_

Address: \_\_\_\_\_

City: \_\_\_\_\_ State: \_\_\_\_\_ ZIP: \_\_\_\_\_

Phone: ( \_\_\_\_ ) \_\_\_\_\_

Comments: \_\_\_\_\_

\_\_\_\_\_

\_\_\_\_\_

\_\_\_\_\_

To: **Technological Computer Innovations**

255 N. Cherrywood Drive

Lafayette, CO 80026-2726

You will receive a registered copy of the game and information on other programs that are being developed by TCI.

(You can print this topic by choosing the **File** menu and selecting **Print Topic**.)

## **Galaxy Map**

The Galaxy Map shows a summary of where you have been and have invoked the long range scan. Your current position will be highlighted in yellow. Quadrants with starbases will be highlighted in white and quadrants with aliens will be shown in red. Void quadrants will be shown in black. A two-digit number is used to represent each sector: the first number shows the number of aliens in the sector; the second shows the number of starbases.



## Long Range Scan

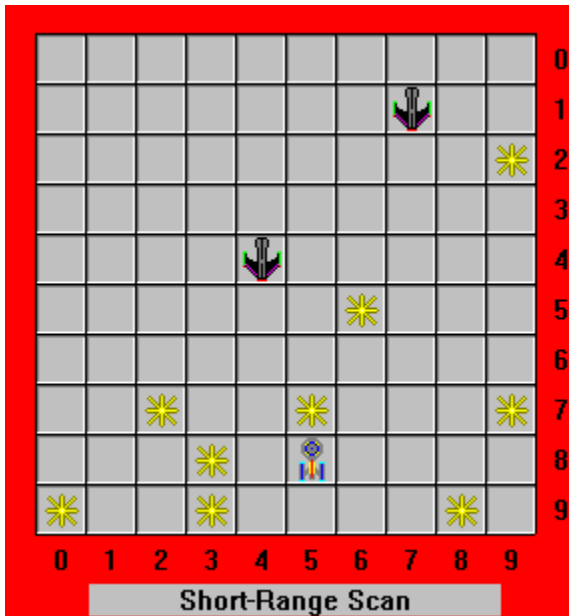
The long range scan is used to view what is located in sectors surrounding your current sector. Viewing the long-range scan from various positions in the galaxy builds the galaxy map. Essentially, the long-range scan is a small view of the galaxy map.

00	10	00
10	00	10
30	00	01

The above Long-Range Scan diagram clip shows the player in the quadrant with the "00" in yellow. The quadrants with red numbering show that there are aliens present within that quadrant. The white "01" represents a starbase and no aliens. The quadrants with numbers in blue have neither aliens nor starbases present.

## Short Range Scan

The short range scan is used to give a detailed breakdown of what is located within the current sector. In the quadrant below, the player's ship is located at sector (5, 8). Alien ships are present in sectors (4, 4) and (7, 1). With the present player's location in relation to the alien ships, it would be impossible to hit either alien with a photon torpedo. So either phasers would have to be used or the player would have to move to another aligned location before firing a photon. The background will turn red when alien ships are present within the current quadrant.



## **Warp**

In order to warp you must select a direction and amount of engine power. You will move across quadrants if currently at the long range scan or galaxy map. If you are viewing the short range scan, you will warp within your current quadrant.

## **Phasers**

Phasers may only be fired while viewing the short range scan. If no aliens are present in the current sector, phasers will be inoperative. Phasers are an effective weapon when multiple aliens are present in the current quadrant or when your ship is not aligned with an alien to use a photon.

To fire phasers, select the amount of energy (0-999) to fire. Energy will be dispersed among the number of aliens residing in the current quadrant.

## **Photons**

Photons may only be fired while viewing the short range scan. For photons, a direction is selected for which the photon will follow. The photon will continue on its course until hitting an object (alien, star, starbase) or reaching the edge of the quadrant grid. Be careful not to destroy your starbases as this will result in the aliens winning the game.

Photons will destroy an alien if hit, but they also require direct alignment between your ship and the alien ship and 500 units of energy to fire.

## Control Panel

The following represents the control panel dialog:



The message area in red (currently "Select direction for warp.") provides status messages about the game and current conditions.

### Navigation:

- Gxy Map: Brings up the galaxy map.
- LR Scan: Brings up the long-range scan.
- SR Scan: Brings up the short-range scan of the current quadrant.
- Computer: Brings up the computer dialog box.

### Direction:

The center area (highlighted in red) shows the direction currently selected. If there is a question mark here it is because no direction has been selected. Press the direction buttons on the outside to select direction. The directional control is used for warp drive and photon firing.

### Weapons:

The controls in the weapons group box invoke the phasers and the photons.

### Shields:

Controls the shields (up or down).

### Phaser Power:

Sets the power for the phasers to fire.

### Warp Power:

Sets the power for warp drive.

## Computer

The computer is used for the following functions:

1. To locate the nearest starbase from your current quadrant location.
2. To locate the nearest alien from your current quadrant location.
3. To enter hyperspace (random placing in the galaxy) to elude aliens in the current quadrant.

To invoke the computer, either press the button from the control dialog or select the menu option for the computer. A dialog box will be display as follows:

Select a function and then press the "OK" to process the function or "Cancel" to abort the process. Bringing up the computer dialog requires 100 units of energy and the various functions require the following amounts of energy:

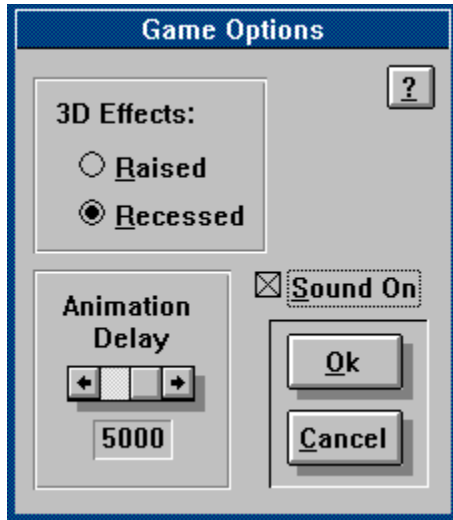
<b>Locate Starbase:</b>	1000 units
<b>Locate Alien:</b>	2000 units
<b>Hyperspace:</b>	2500 units

The above field on the dialog box labeled "After Function:" will tell you how much energy will remain after completing the function selected. If the dialog box comes up and some of the functions are not available (grayed), this is because there is not enough energy to complete these functions.

When the Locate Starbase or Locate Alien function is selected, either a magenta or green box will highlight the quadrant in the LRS or Galaxy map, depicting where the object is located. A message will also appear in the message box stating where the object is located.

## Options Dialog

The Options dialog box looks like this:



The "3D Effects" radio buttons are used to give the windows a 3D effect. Select which effect you want and click "OK" to keep the change.

The "Sound On" check box is used to toggle the sound off and on. Check this box if you want to use sound. Sound will only be available if you have either multimedia extensions or Windows 3.1 and the proper sound board and drivers.

Options selected here are saved into the STELLAR.INI file when "OK" is pressed. If the Cancel button is pressed, no options are changed and thus are not stored in the .INI file.

Pressing the "?" button when in this dialog gives help about the functions.



## **High Scores**

The high scores dialog box shows the names and scores of the top five high scores. Scores are determined by the number of aliens defeated in a winning game. These scores are saved into the STELLAR.INI file located in the same path as the executable file STELLAR.EXE. If you wish to clear the high scores, remove the HighScore= entries from the STELLAR.INI file.

## **Abort**

Selecting abort will bring up a message box asking you to confirm whether or not you wish to abort the current game. If you answer "Yes", the game will end and the complete galaxy will be revealed to show where all aliens and starbases were located.

Technological Computer Innovations provides custom programming in the MS-DOS and MS-Windows environments. (303) 673-9046.

## **Stellar Explorer Definitions**

### **Computer**

Used to find aliens and starbases or enter hyperspace. Can be brought up by menu option or button in the control dialog.

### **Long-Range Scan**

This view shows the quadrants immediately surrounding your ship, including the one you are presently occupying. Two-digit numbers are used to show the number of aliens and number of starbases in each respective quadrant. For example, if a quadrant has a "20" on it, that means there are two aliens and zero starbases within that quadrant.

### **MIDI Mapper**

Control panel applet in Windows 3.1 (or 3.0 with multimedia extensions) that directs MIDI output from programs to installed MIDI devices. See the Windows 3.1 user's reference manual for more information.

### **Phaser Power**

This scrollbar allows you to control how much energy is used when firing phasers. The more energy directed to the phasers, the more powerful they will be when hitting alien ships. However, when firing phasers, this amount is directly drained from your ship's supply. If you expend too much energy using phasers, the game will be over.

### **Phasers**

Weapon used by player and aliens. Works best when attacking multiple aliens within the same quadrant. The player can determine how much energy is routed to phasers by the Phaser Power scrollbar.

### **Photons**

Weapon used to attack aliens when directly aligned (horizontally, vertically or diagonally). If photons are working and they are available, a photon hit ensures destruction. Photons require 500 units of energy per shot.

### **Quadrant**

Each cell within the 10 x 10 galaxy.

### **Sector**

Division of each quadrant - also smallest area that can be occupied. Alien ships, stars, and the player's ship each occupy a sector.

### **Shareware**

A software distribution concept where if the user of a program likes and uses it, they contribute money to the author for further development and support. Program copies may be copied and distributed freely, retaining all original files and copyright information.

### **Short-Range Scan**

A detailed view of the current quadrant showing your ship, alien ships, starbases and stars. This view is used for docking with a starbase and fighting alien ships.

### **Starbase**

HQ for player's ship. When landing on the same sector as a starbase in Short-Range Scan, the player's ship is repaired, and energy and photons are replenished.

### **Warp Power**

This scrollbar allows you to control how much power is used for the warp engines. Each unit of power will take you one sector (if in Short-Range scan) or one quadrant (Long-Range Scan or Galaxy Map) in the direction selected in the directional control.

## **Function Keys:**

The following function keys are available in Stellar Explorer:

<b>F1</b>	<b>Help Index</b>
<b>F2</b>	<b>New game</b>
<b>F3</b>	<b>Abort mission</b>
<b>F4</b>	<b>Options</b>
<b>F5</b>	<b>Sound ON/OFF</b>
<b>F8</b>	<b>Help Key</b>
<b>F10</b>	<b>Exit</b>